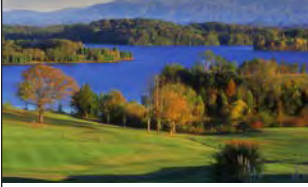


LAKE SIDE LIVING



THE RHINE I



THE RHINE II



THE RHINE III



■ THE BORD DE L'EAU COLLECTION

THE RHINE

The Rhine brilliantly combines rustic and refined characteristics, with tall, sloping roof lines, dramatic windows framed by heavy wooden shutters, and classic French Country details in stone, stucco and brick. Starting at 1,811 square feet, the cozy interior easily flows from the foyer to the dining room, kitchen and great room, opening up to an expansive covered porch. The luxurious master suite also steps out to the covered porch, while the second bedroom also features an ensuite bathroom. The laundry room is conveniently tucked behind the kitchen to complete the main level. An optional second floor or terrace level may be chosen to increase the living space with a second family activity zone, two bedrooms and storage.



RARITY BAY
ON TELlico LAKE

Contact:

Grant McMahan | 865-247-7068
grant@mccamyconstruction.com

LAKE SIDE LIVING

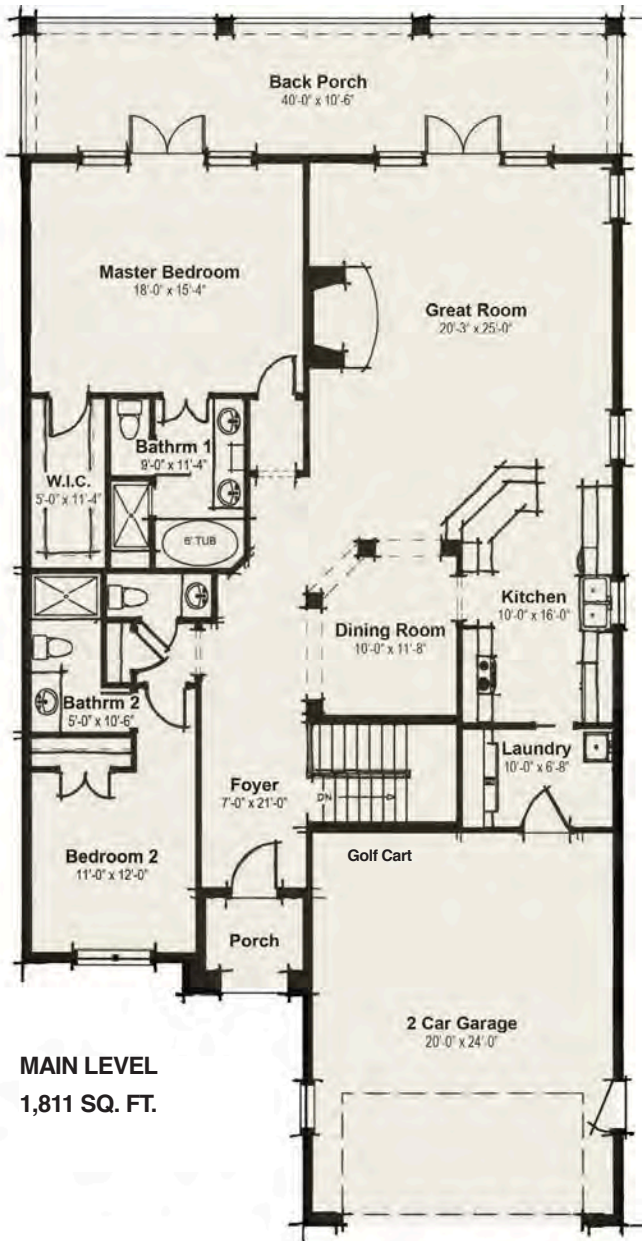
■ THE BORD DE L'EAU COLLECTION

THE RHINE

Contact:

Grant McMahan | 865-247-7068

grant@mccamyconstruction.com



MAIN LEVEL
1,811 SQ. FT.



SECOND FLOOR
1077 SQ. FT.



TERRACE LEVEL
1,522 SQ. FT.

HOME FEATURES

- Main Living 1,811 sq ft
- Classic French Country style
- Dimensional shingle roof
- Brick/stone/stucco detailing
- Wood shutters
- Oversized 8' entry & 8' garage door
- 9' ceilings throughout
- Tray ceilings in the master
- Smooth walls and rounded corners
- Wide hallways and openings
- Gas fireplace with logs
- Tile shower in the master bath
- Comfort height toilets
- 5.25" base board/crown
- 2.75" casings
- Pre-finished engineered hardwood
- Energy efficient vinyl windows
- Granite kitchen countertops with tile backsplash
- Stainless steel appliances

BAY HOME COLLECTION BUILT BY

