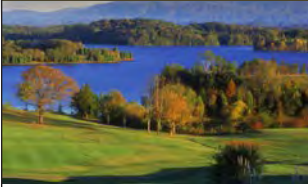


LAKE SIDE LIVING



THE SEINE I



THE SEINE II



THE SEINE III



■ THE BORD DE L'EAU COLLECTION

THE SEINE

Varied roof lines, dormers and asymmetrical design give this attractive French Country manor a graceful dose of elegance, accented by stone and brick finishes in three distinctive plans to blend beautifully with the countryside.

The 1,600 square foot main floor is perfectly suited for entertaining, with a spacious kitchen open to a dining area and great room. The main floor also features a luxurious master suite opening to a deck plus a second bedroom with an ensuite bath.

The laundry room is located off the master suite for added convenience. An optional terrace may be incorporated to provide additional living space, bedrooms and storage.



RARITY BAY
ON TELlico LAKE

The timeless design of The Seine is punctuated by a high degree of detail that lends to relaxed, casual living.

Contact:

Grant McMahan | 865-247-7068
grant@mccamyconstruction.com

LAKESIDE LIVING

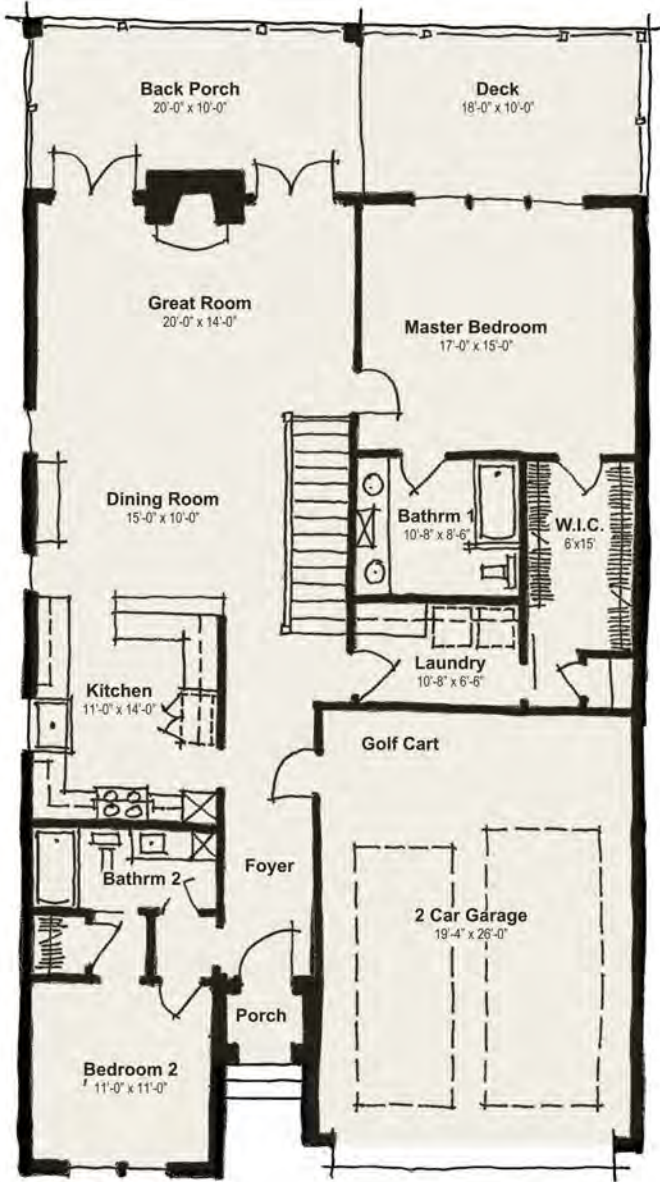
■ THE BORD DE L'EAU COLLECTION

THE SEINE

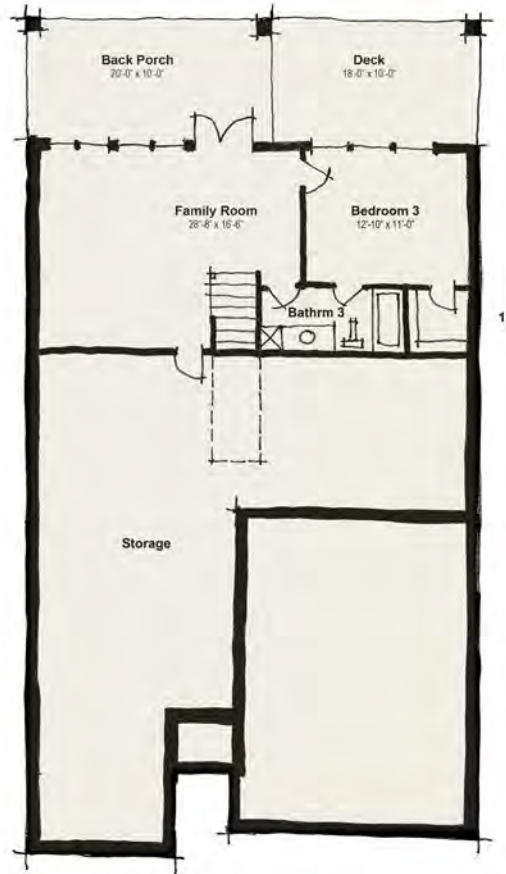
Contact:

Grant McMahan | 865-247-7068

grant@mccamyconstruction.com



MAIN LEVEL
1,600 SQ. FT.



TERRACE LEVEL
665 SQ. FT.

■ **HOME FEATURES**

- Main Living 1,600 sq ft
- Classic French Country style
- Dimensional shingle roof
- Brick/stone/stucco detailing
- Wood shutters
- Oversized 8' entry & 8' garage door
- 9' ceilings throughout
- Tray ceilings in the master
- Smooth walls and rounded corners
- Wide hallways and openings
- Gas fireplace with logs
- Tile shower in the master bath
- Comfort height toilets
- 5.25" base board/crown
- 2.75" casings
- Pre-finished engineered hardwood
- Energy efficient vinyl windows
- Granite kitchen countertops with tile backsplash
- Stainless steel appliances

BAY HOME COLLECTION BUILT BY

