

LAKE SIDE LIVING



LE TABOR I



LE TABOR II



Le Tabor features classic French Country architecture, with a combination of stone, stucco and brick accentuated by heavy wooden shutters, timbers, brick detailing and varying roof lines.

■ THE CHAMBORD COLLECTION

LE TABOR

Reminiscent of the grandest French Country estates, Le Tabor is an artful combination of stone, stucco and brick with dimensional rooflines, available in two exterior designs — one featuring a timber-covered front porch and brick accents and the other option punctuated by eyebrow accents and stone-ensconced covered entry with an inviting double door. Both designs incorporate an oversized garage with extra parking for a golf cart on the 2,380 mail level.

Inside, a two-story foyer hints at the open floor plan featuring a spacious great room, dining area and kitchen, all flooded with natural light and opening to a roomy covered porch. A luxurious master suite is just off the great room, and a second bedroom or study with full bath also are on the main floor.

A full pantry and laundry room are tucked behind the kitchen, with ample closet space throughout. Complete the 1,141 second floor to add two additional bedrooms, each with a private bathroom, plus an exercise room. A 1,550 terrace level also is available, providing for two bedrooms and two full bathrooms and a family room that opens to a patio.



RARITY BAY
ON TELlico LAKE

Contact:

Grant McMahan | 865-247-7068
grant@mccamyconstruction.com

LAKE SIDE LIVING

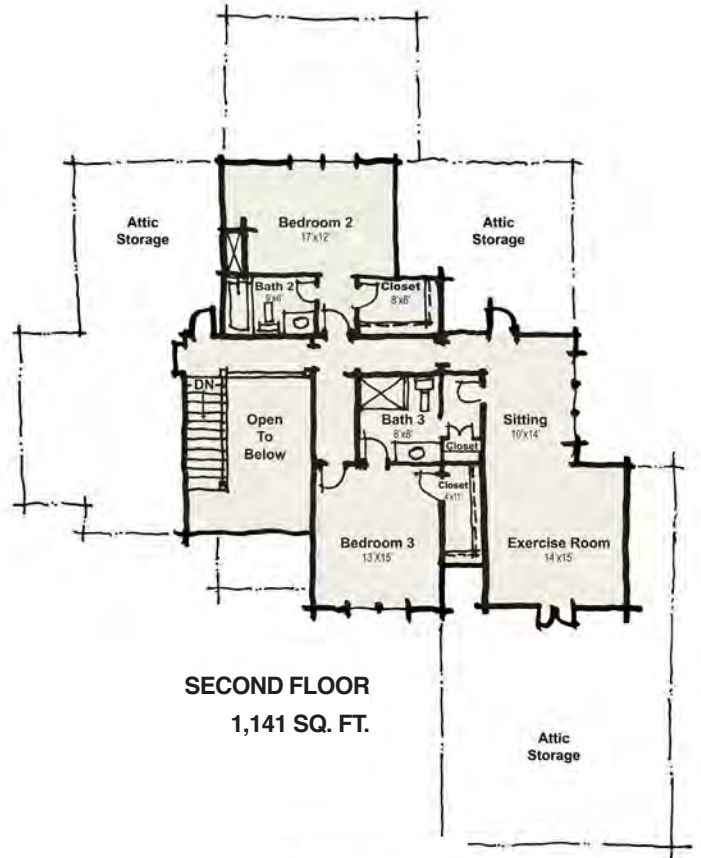
THE CHAMBORD COLLECTION

LE TABOR

Contact:

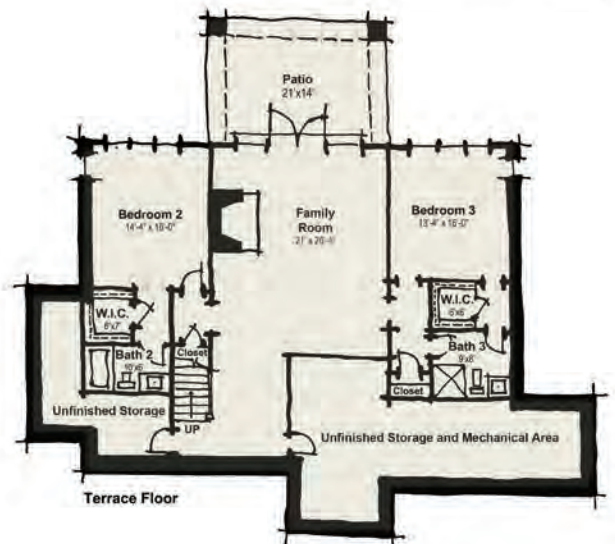
Grant McMahan | 865-247-7068

grant@mccamyconstruction.com



HOME FEATURES

- Main Living 2,380 sq ft
- Classic French Country style
- Dimensional shingle roof
- Brick/stone/stucco detailing
- Wood shutters
- Oversized 8' entry & 8' garage door
- 9' ceilings throughout
- Tray ceilings in the master
- Smooth walls and rounded corners
- Wide hallways and openings
- Gas fireplace with logs
- Tile shower in the master bath
- Comfort height toilets
- 5.25" base board/crown
- 2.75" casings
- Pre-finished engineered hardwood
- Energy efficient vinyl windows
- Granite kitchen countertops with tile backsplash
- Stainless steel appliances



BAY HOME COLLECTION BUILT BY

