

# LAKE SIDE LIVING



THE PYRENEES I



THE PYRENEES II



THE PYRENEES III

## THE CHAMBORD COLLECTION

# THE PYRENEES

**T**he Pyrenees is appropriately casual for those seeking comfort and ease of living wrapped in quality and style. Choose from three distinct exteriors — one with asymmetric gables atop a stone and brick exterior with eyebrow accents and wood shutters, while the other features a stone facade trimmed in siding with wood beams and eyebrow detailing topped by an intriguing half-hipped gable roofline. The covered porch entry opens to an expansive living area that flows freely from great room to kitchen, dining room and breakfast nook. Both the great room and the generous master bedroom with ensuite bath extend to a large covered back porch. The 2,000 square-foot main level also includes a study or second bedroom that connects to a second full bath and a laundry room conveniently connecting the kitchen and oversized garage. An optional 1,177-square foot terrace level adds two guest bedrooms with ensuite baths and a living room, all with private access to a lower patio. Plentiful storage also is provided with the terrace addition.



**RARITY BAY**  
ON TELlico LAKE

Contact:

Grant McMahan | 865-247-7068

grant@mccamyconstruction.com

# LAKESIDE LIVING

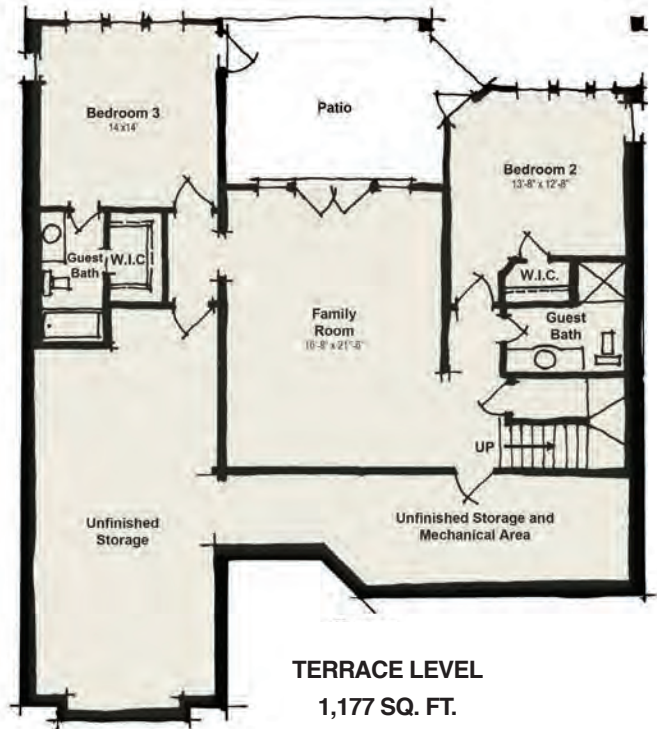
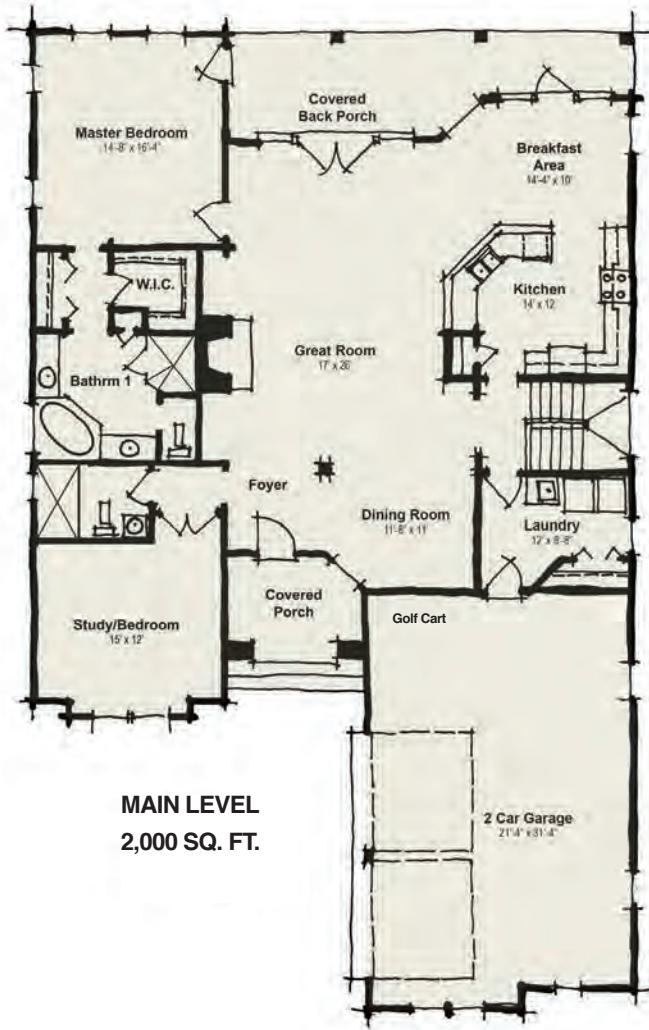
■ THE CHAMBORD COLLECTION

## THE PYRENEES

Contact:

Grant McMahan | 865-247-7068

grant@mccamyconstruction.com



### ■ HOME FEATURES

- Main Living 2,000 sq ft
- Classic French Country style
- Dimensional shingle roof
- Brick/stone/stucco detailing
- Wood shutters
- Oversized 8' entry & 8' garage door
- 9' ceilings throughout
- Tray ceilings in the master
- Smooth walls and rounded corners
- Wide hallways and openings
- Gas fireplace with logs
- Tile shower in the master bath
- Comfort height toilets
- 5.25" base board/crown
- 2.75" casings
- Pre-finished engineered hardwood
- Energy efficient vinyl windows
- Granite kitchen countertops with tile backsplash
- Stainless steel appliances

BAY HOME COLLECTION BUILT BY

**M<sup>c</sup>Camy**  
Construction