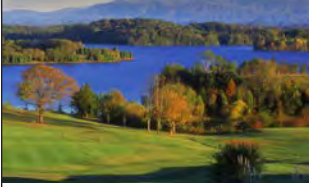


# LAKE SIDE LIVING



THE MONCEAU I



THE MONCEAU II



THE MONCEAU III



## ■ THE PARCS COLLECTION

# THE MONCEAU

**N**amed after one of the most elegant gardens in Paris, the Monceau starts at 1600 square feet on the main level. Striking exterior details punctuate the reaching rooflines, tall windows and combinations of stone, stucco and brick to evoke the sumptuous French Country lifestyle of old. A welcoming covered porch provides entry to the foyer and study before opening to a spectacular great room, spacious kitchen with large island and cozy hearth room. The large master bedroom and ensuite bath hold a hidden surprise of the connecting laundry room for optimal convenience. A partially covered back porch provides added space for entertaining or luxuriating in the peace and quiet of the natural surroundings. An option for a 670-square foot terrace level provides additional space for family and guests with one bedroom, bathroom, and large family room opening to a lower covered patio. The terrace level also affords significant storage space in addition to the oversized garage.



**RARITY BAY**  
ON TELlico LAKE

Contact:

Grant McMahan | 865-247-7068

[grant@mccamyconstruction.com](mailto:grant@mccamyconstruction.com)

# LAKE SIDE LIVING

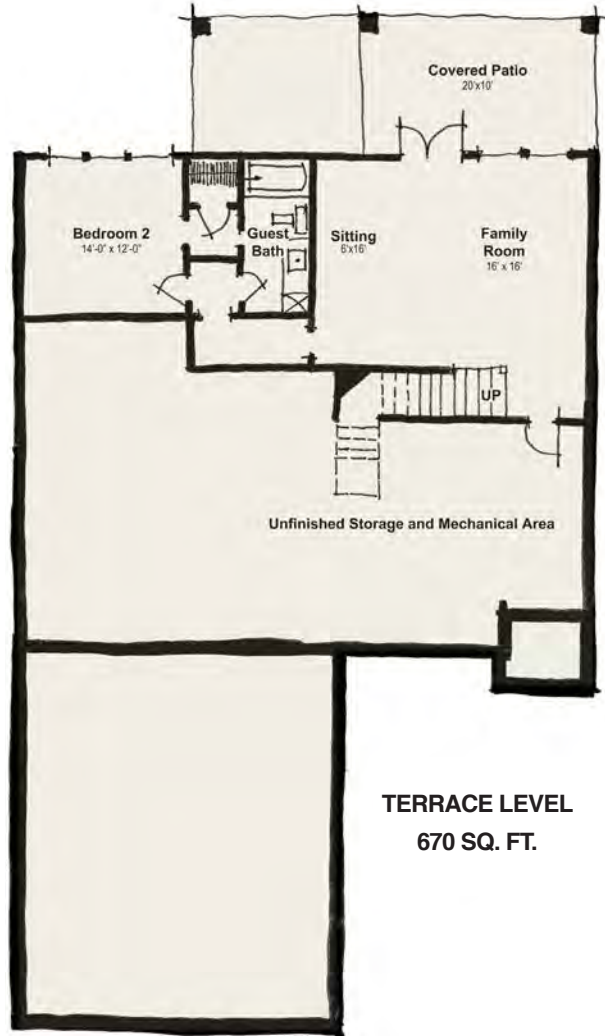
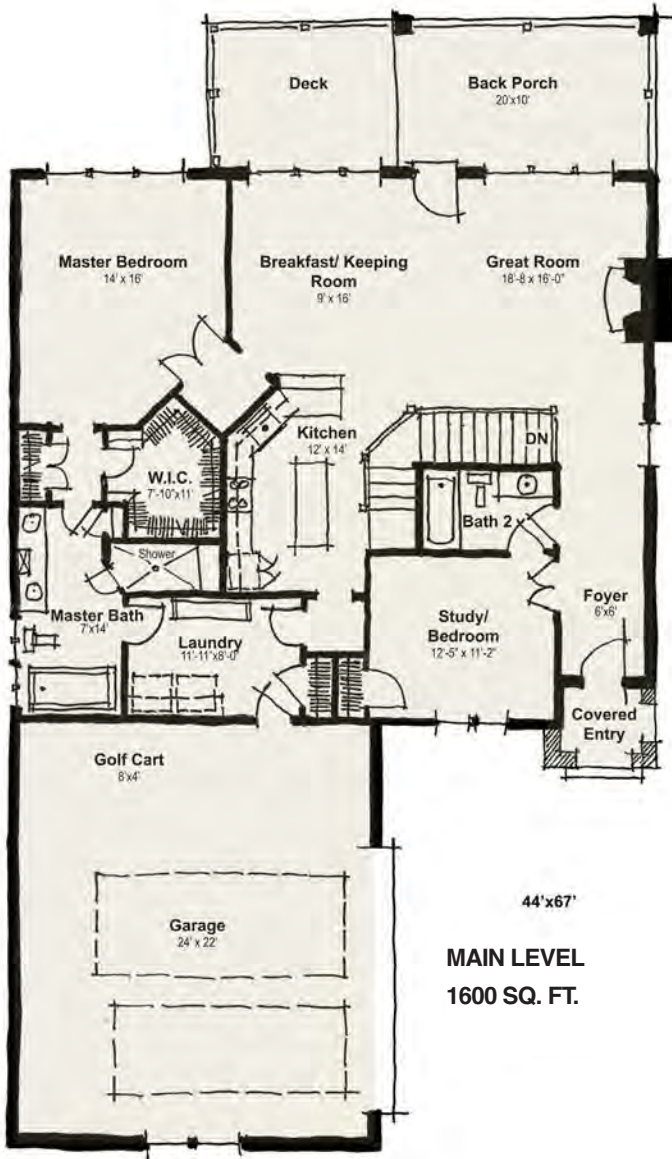
THE PARCS COLLECTION

## THE MONCEAU

Contact:

Grant McMahan | 865-247-7068

grant@mccamyconstruction.com



### HOME FEATURES

- Main Living 1,600 sq ft
- Classic French Country style
- Dimensional shingle roof
- Brick/stone/stucco detailing
- Wood shutters
- Oversized 8' entry & 8' garage door
- 9' ceilings throughout
- Tray ceilings in the master
- Smooth walls and rounded corners
- Wide hallways and openings
- Gas fireplace with logs
- Tile shower in the master bath
- Comfort height toilets
- 5.25" base board/crown
- 2.75" casings
- Pre-finished engineered hardwood
- Energy efficient vinyl windows
- Granite kitchen countertops with tile backsplash
- Stainless steel appliances

BAY HOME COLLECTION BUILT BY

